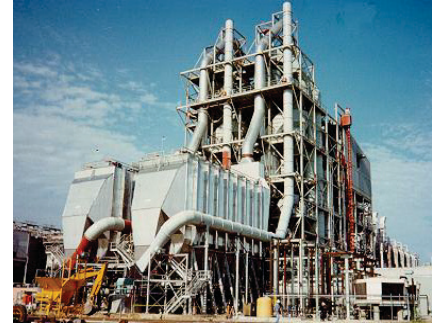


Metals Overview

Providing comprehensive construction services to the Metals Processing Industry has been a significant source of work for CCC Group since its inception, with most of that experience gained in aluminum, copper, gold and steel. We have also worked in and around molybdenum, magnesium, manganese, titanium and silver. As you will find below, CCC Group has been involved in every phase of work required to construct and/or maintain a facility processing these metals.



Mining Phase

- Infrastructure of new mines
- Material handling equipment and systems which includes conveyors, bulk handling equipment, crushers, screens, flotation equipment and heap leaching equipment.

Refining Phase

- Bulk loaders and unloaders
- Complete material handling equipment
- Complete material classifying equipment
- Washers
- Crushers / grinding equipment
- Scrubbers
- Piping
- Precipitators
- Horizontal and vertical kilns
- Coolers / exchangers
- Residue accumulation and storage

Smelting Phase

- Bulk loaders and unloaders
- Ore handling equipment
- Electromelt furnaces
- Carbonbake furnaces
- Conventionally fired furnaces
- Casting units
- Ingot facilities

Specialty Projects

- Extrusion mills
- Metals coating mills
- Anodizing plants
- Annealing facilities
- Forging mills
- Rolling mills
- Tube mills
- Wire drawing mills
- Scrap processing facilities / car shredders
- Metals atomizing facilities
- Slitting
- Boiler repairs
- ASME field / shop fabrication

Metals Industries Clients

- Alcoa (since 1949)
- Alcan (formerly Pechiney)
- ASARCO, LLC (copper)
- BHP Billiton (iron ore)
- Carpenter Technology Corp. (alloys)
- Commercial Metals Company (formerly Structural Metals Inc. - SMI)
- Dave Steel Company
- Gulf States Tube (steel)
- JSW Steel
- IPSCO (Oil Country Tubular Goods – OCTG)
- Integrated Shredder Technology (steel fab)
- Kennecott Utah Copper
- Noranda Alumina
- Newmont Mining Corporation (gold)
- Sherwin Alumina (formerly Reynolds Metals)
- Timet (Titanium Metals Corporation)